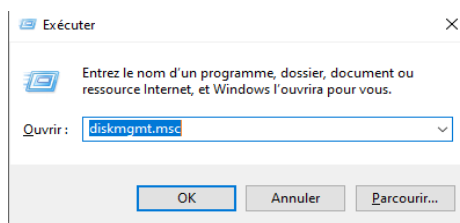


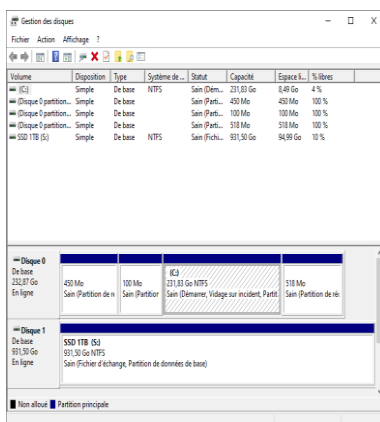
## Installing a dual boot Ubuntu/Windows 10

First of all, you'll need to have an **empty** USB drive and of course a computer with your primary hard drive not full.

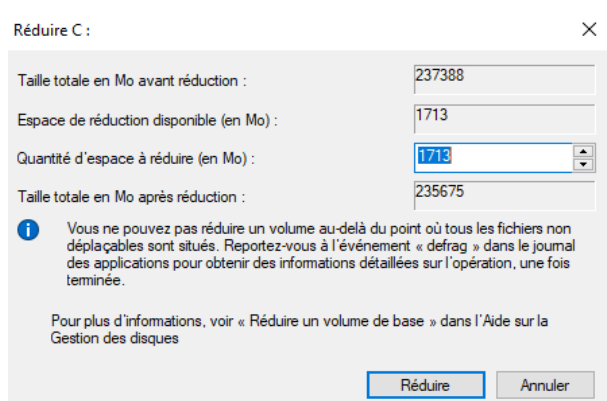
- 1) To install Linux (Ubuntu) beside your Windows 10 you have to first download the Ubuntu's ISO. It can be easily found on the internet. When the download is complete, keep the ISO on a folder that you can easily find (or in your desktop for example). You'll need it after.
- 2) Next, you have to partition system disk. To do that, you have to launch the disk manager by pressing WINDOWS and R simultaneously. Then, enter **diskmgmt.msc** and click on OK



Then, this window would appear



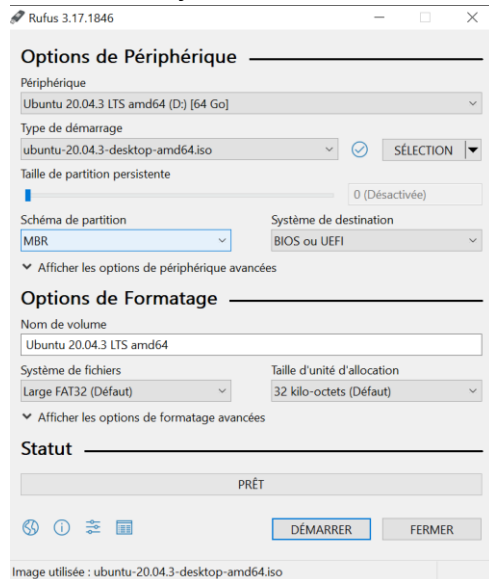
- 3) Find the disk where Windows is installed (here, the C:), right click on it and select "Reduce Volume". After it, this window would appear



Now, enter the desired size for the Ubuntu partition in **Amount of space to reduce (Mo)**. 25go is sufficient, so you can enter 25000. If you don't have 25go of free space, you can enter 15go (15000 Mo). But under this size, Ubuntu may get some problems during the installation.

Then, click on "Reduce". It will create a new empty partition and we'll use it for Ubuntu.

- 4) After that, install "Rufus". With Rufus, we'll create a USB drive with Ubuntu installed on it. Select your USB drive and be sure that it's on "FAT32". Import the ISO downloaded just before and click on 'Start'.



- 5) When the installation is finished, shut off your PC and start it with the usb drive plug in. Go on the bios and select your USB drive with Unbutu installed. Then, a dark windows will appear. Select Ubuntu and press ENTER.
- 6) Now Ubuntu must be started. Select your language and click on "Install Ubuntu". Select "Normal installation", "Download update during the installation of Ubuntu" to download all the update you need for Ubuntu. Then click on continue, select the first one (install Ubuntu in dual boot with windows) and that's it, Linux Ubuntu is installed ! Now you just have to configure your Ubuntu.